

Roger Tokheim
Digital Electronics
Eighth Edition

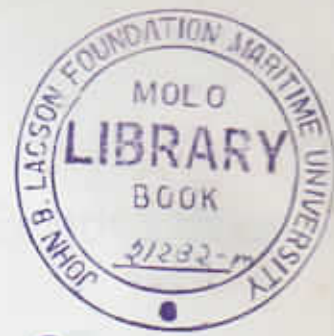


**This
International
Student Edition
is for use
outside of
the U.S.**

McGRAW-HILL INTERNATIONAL EDITION

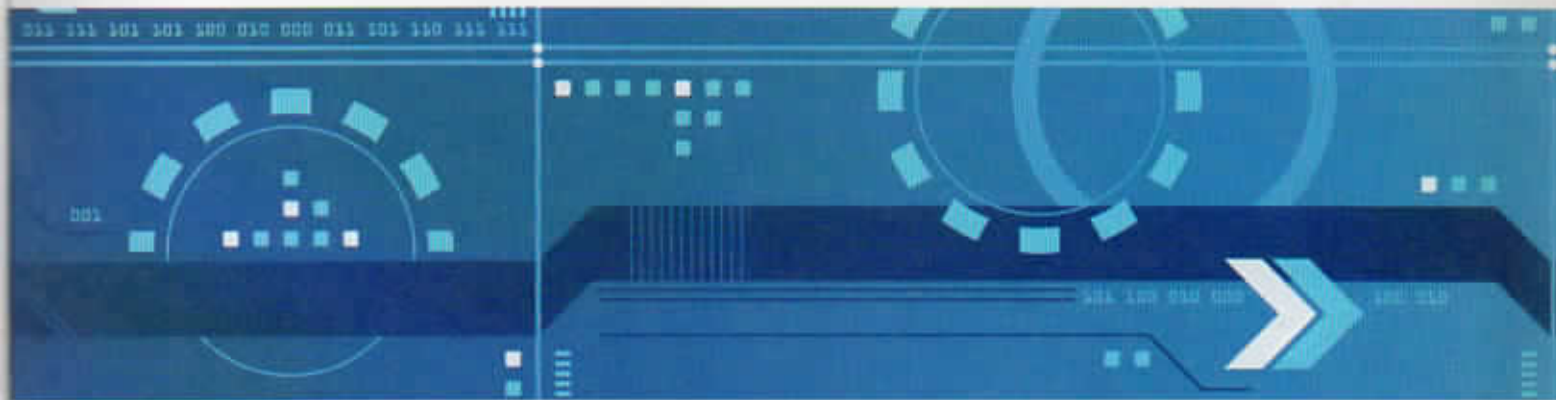


Ref
621.388
TG4U
2014
7



Digital Electronics

Principles and Applications



Roger Tuckman

Contents

Editor's Foreword	viii	3-10 Using Inverters to Convert Gates	59
Preface	ix	3-11 Practical TTL Logic Gates	62
Acknowledgments	xi	3-12 Practical CMOS Logic Gates	65
Walkthrough	xii	3-13 Troubleshooting Simple Gate Circuits	69
About the Author	xiv	3-14 IEEE Logic Symbols	72
Safety	xv	3-15 Simple Logic Gate Applications	73
Chapter 1 Digital Electronics	1	3-16 Logic Functions Using Software (BASIC Stamp Module)	77
1-1 What Is a Digital Signal?	2	Summary	82
1-2 Why Use Digital Circuits?	4	Chapter Review Questions	83
1-3 Where Are Digital Circuits Used?	7	Critical Thinking Questions	86
1-4 How Do You Generate a Digital Signal?	8	Answers to Self-Tests	89
1-5 How Do You Test for a Digital Signal?	15	Chapter 4 Combining Logic Gates	90
1-6 Simple Instruments	19	4-1 Constructing Circuits from Boolean Expressions	91
Summary	23	4-2 Drawing a Circuit from a Maxterm Boolean Expression	92
Chapter Review Questions	23	4-3 Truth Tables and Boolean Expressions	93
Critical Thinking Questions	25	4-4 Sample Problem	97
Answers to Self-Tests	26	4-5 Simplifying Boolean Expressions	99
Chapter 2 Numbers We Use in Digital Electronics	27	4-6 Karnaugh Maps	100
2-1 Counting in Decimal and Binary	27	4-7 Karnaugh Maps with Three Variables	101
2-2 Place Value	28	4-8 Karnaugh Maps with Four Variables	103
2-3 Binary to Decimal Conversion	30	4-9 More Karnaugh Maps	104
2-4 Decimal to Binary Conversion	30	4-10 A Five-Variable Karnaugh Map	105
2-5 Electronic Translators	31	4-11 Using NAND Logic	106
2-6 Hexadecimal Numbers	34	4-12 Computer Simulations: Logic Converter	108
2-7 Octal Numbers	36	4-13 Solving Logic Problems: Data Selectors	112
2-8 Bits, Bytes, Nibbles and Word Size	37	4-14 Programmable Logic Devices (PLDs)	116
Summary	39	4-15 Using De Morgan's Theorems	124
Chapter Review Questions	39	4-16 Solving a Logic Problem (BASIC Stamp Module)	126
Critical Thinking Questions	40	Summary	131
Answers to Self-Tests	42	Chapter Review Questions	132
Chapter 3 Logic Gates	43	Critical Thinking Questions	136
3-1 The AND Gate	43	Answers to Self-Tests	136
3-2 The OR Gate	46	Chapter 5 IC Specifications and Simple Interfacing	141
3-3 The Inverter and Buffer	48	5-1 Logic Levels and Noise Margin	141
3-4 The NAND Gate	50	5-2 Other Digital IC Specifications	146
3-5 The NOR Gate	51	5-3 MOS and CMOS ICs	150
3-6 The Exclusive OR Gate	53		
3-7 The Exclusive NOR Gate	54		
3-8 The NAND Gate as a Universal Gate	56		
3-9 Gates with More Than Two Inputs	57		

5-4	Interfacing TTL and CMOS with Switches . . .	152
5-5	Interfacing TTL and CMOS with LEDs . . .	156
5-6	Interfacing TTL and CMOS ICs	160
5-7	Interfacing with Buzzers, Relays, Motors, and Solenoids	164
5-8	Optoisolators	167
5-9	Interfacing with Servo and Stepper Motors . . .	170
5-10	Using Hall-Effect Sensors	178
5-11	Troubleshooting Simple Logic Circuits	185
5-12	Interfacing the Servo (BASIC Stamp Module)	186
	Summary	189
	Chapter Review Questions	190
	Critical Thinking Questions	194
	Answers to Self-Tests	194

Chapter 6 Encoding, Decoding, and Seven-Segment Displays 196

6-1	The 8421 BCD Code	196
6-2	The Excess-3 Code	198
6-3	The Gray Code	199
6-4	The ASCII Code	202
6-5	Encoders	204
6-6	Seven-Segment LED Displays	205
6-7	Decoders	208
6-8	BCD-to-Seven-Segment Decoder/Drivers . .	209
6-9	Liquid-Crystal Displays	213
6-10	Using CMOS to Drive an LCD Display . . .	218
6-11	Vacuum Fluorescent Displays	221
6-12	Driving a VF Display	224
6-13	Troubleshooting a Decoding Circuit	227
	Summary	229
	Chapter Review Questions	230
	Critical Thinking Questions	233
	Answers to Self-Tests	234

Chapter 7 Flip-Flops 236

7-1	The R-S Flip-Flop	236
7-2	The Clocked R-S Flip-Flop	239
7-3	The D Flip-Flop	241
7-4	The J-K Flip-Flop	243
7-5	IC Latches	247
7-6	Triggering Flip-Flops	249
7-7	Schmitt Trigger	251
7-8	IEEE Logic Symbols	252
7-9	Application: Latched Encoder-Decoder System	254
	Summary	257
	Chapter Review Questions	258
	Critical Thinking Questions	259
	Answers to Self-Tests	260

Chapter 8 Counters 262

8-1	Ripple Counters	262
8-2	Mod-10 Ripple Counters	264
8-3	Synchronous Counters	265
8-4	Down Counters	267
8-5	Self-Stopping Counters	269
8-6	Counters as Frequency Dividers	270
8-7	TTL IC Counters	272
8-8	CMOS IC Counters	276
8-9	A Three-Digit BCD Counter	280
8-10	Counting Real-World Events	284
8-11	Using a CMOS Counter in an Electronic Game	288
8-12	Using Counters—An Experimental Tachometer	291
8-13	Troubleshooting a Counter	295
	Summary	298
	Chapter Review Questions	298
	Critical Thinking Questions	302
	Answers to Self-Tests	303

Chapter 9 Shift Registers 305

9-1	Serial-Load Shift Registers	307
9-2	Parallel-Load Shift Registers	308
9-3	A Universal Shift Register	311
9-4	Using the 74194 IC Shift Register	313
9-5	An 8-Bit CMOS Shift Register	315
9-6	Using Shift Registers: Digital Roulette . . .	318
9-7	Troubleshooting a Simple Shift Register . .	323
	Summary	325
	Chapter Review Questions	325
	Critical Thinking Questions	327
	Answers to Self-Tests	328

Chapter 10 Arithmetic Circuits 330

10-1	Binary Addition	330
10-2	Half Adders	332
10-3	Full Adders	333
10-4	3-Bit Adders	335
10-5	Binary Subtraction	336
10-6	Parallel Subtractors	338
10-7	IC Adders	340
10-8	Binary Multiplication	343
10-9	Binary Multipliers	345
10-10	2s Complement Notation, Addition, and Subtraction	348
10-11	2s Complement Adders/Subtractors	353
10-12	Troubleshooting a Full Adder	355
	Summary	357
	Chapter Review Questions	357

Critical Thinking Questions.....	358	13-4	Microcomputer Address Decoding.....	454
Answers to Self-Tests	359	13-5	Data Transmission.....	457
Chapter 11 Memories.....	361	13-6	Detecting Errors in Data Transmissions....	461
11-1 Overview of Memory.....	362	13-7	Data Transmission in a Computer System...	464
11-2 Random-Access Memory (RAM).....	365	13-8	Programmable Logic Controllers (PLCs)...	469
11-3 Static RAM ICs.....	367	13-9	Microcontrollers.....	473
11-4 Using a SRAM.....	370	13-10	The BASIC Stamp Microcontroller Modules.....	475
11-5 Read-Only Memory (ROM).....	372	13-11	Digital Signal Processing.....	482
11-6 Using a ROM.....	375	13-12	DSP in a Digital Camera.....	486
11-7 Programmable Read-Only Memory [PROM].....	377	13-13	Microcontroller: Photo Input and Servo Motor Output.....	488
11-8 Nonvolatile Read/Write Memory.....	381	Summary.....		493
11-9 Memory Packaging.....	384	Chapter Review Questions.....		493
11-10 Computer Bulk Storage Devices.....	387	Critical Thinking Questions.....		496
11-11 Digital Potentiometer: Using NV Memory...	394	Answers to Self-Tests		498
Summary.....	398	Chapter 14 Connecting with Analog Devices.....	499	
Chapter Review Questions.....	399	14-1 D/A Conversion.....	500	
Critical Thinking Questions.....	401	14-2 Operational Amplifiers.....	501	
Answers to Self-Tests	401	14-3 A Basic D/A Converter.....	502	
Chapter 12 Simple Digital Systems.....	403	14-4 Ladder-Type D/A Converters.....	504	
12-1 Elements of a System.....	403	14-5 An A/D Converter.....	506	
12-2 A Digital System on an IC.....	406	14-6 Voltage Comparators.....	508	
12-3 Digital Games.....	407	14-7 An Elementary Digital Voltmeter.....	510	
12-4 The Digital Clock.....	412	14-8 Other A/D Converters.....	512	
12-5 The LSI Digital Clock.....	415	14-9 A/D Converter Specifications.....	516	
12-6 The Frequency Counter.....	419	14-10 An A/D Converter IC.....	517	
12-7 An Experimental Frequency Counter.....	423	14-11 Digital Light Meter.....	520	
12-8 LCD Timer with Alarm.....	426	14-12 Digitizing Temperature.....	523	
12-9 Simple Distance Sensing.....	432	Summary.....	525	
12-10 JTAG/Boundary Scan.....	437	Chapter Review Questions.....	525	
Summary.....	441	Critical Thinking Questions.....	527	
Chapter Review Questions.....	441	Answers to Self-Tests	528	
Critical Thinking Questions.....	443	Appendix A Solder and the Soldering Process....	530	
Answers to Self-Tests	444	Appendix B 2s Complement Conversions.....	535	
Chapter 13 Computer Systems.....	445	Glossary of Terms and Symbols.....	536	
13-1 The Computer.....	445	Credits.....	549	
13-2 The Microcomputer.....	447	Index.....	550	
13-3 Microcomputer Operation.....	450			

Symbols

- & (ampersand), 73
- ' (apostrophe) symbol, 48
- (\cdot) multiplication dot, 45
- ($\bar{}$) overbar, 48
- + symbol, 58
- ~ (tilde), 81
- | (vertical line), 81
- > symbol, 249, 277

A

- ABEL software, 116
- Absolute encoders, using Gray code, 200
- AC, in a core part number, 65
- Access time, 370, 393
- AC-CMOS, 148
- Accumulating, 484
- Accumulator, 452, 485
- Accuracy, of an A/D converter, 517
- Acid fluxes, 531–532
- ACT, in a core part number, 65
- Action part, of an instruction, 451
- Activators, 531
- Active HIGH input, 74
- Active HIGH input switch, 153
- Active LOW inputs, 204
- Active LOW outputs, 204
- Active LOW switches, 153
- Active-matrix LCDs (AMLCDs), 216–217
- A/D converter (analog-to-digital converter), 5, 6, 483, 499
 - example of a digitizer, 523
 - IC, 517–519
 - other, 512–515
 - specifications, 516–517
 - translating analog voltage at input, 506
 - truth table for, 506, 507
 - using as a digital voltmeter, 510–512
- ADC0804 8-bit A/D converter IC, 517, 519, 520
- Add steps, in binary multiplication, 346, 347
- Add-and-shift method, 345, 346
- Add-and-shift multiplication, 346, 347
- Adders, 330
 - used for subtraction, 349–350
- Address
 - rotary switch positions as, 372
 - of a word, 366
- Address bus, 362, 448
- Address decoder, 454, 455, 456
- Address inputs, of the 7489 RAM, 367
- Alarm, LCD timer with, 426–429, 430–432
- Algorithm, 487
- "All or nothing gate," 43
- Allegro Microsystem, 3132 Hall-effect switch, 180
- Alphanumeric code, 202
- ALS, in a core part number, 65
- Alternate NOT symbol, 48
- Alternative NAND symbol, 61
- ALU (arithmetic-logic unit), 330, 334, 340, 446
- American Standard Code for Information Interchange (ASCII), 27, 202, 203
- AMLCDs (active-matrix LCDs), 216–217
- Ammeter, as output indicator, 5
- Ampersand (&)
 - inside the IEEE standard AND gate symbol, 73
 - in the NAND function in PBASIC, 81
- Analog circuits, 2
- Analog devices, 2, 499

- Analog electronic systems, 4, 5
- Analog in nature, natural phenomena as, 4–5, 499
- Analog input to digital information. *See* A/D converter (analog-to-digital converter)
- Analog inputs, to digital systems, 499
- Analog measuring device, 2
- Analog meter, 3
- Analog-to-digital (A/D) converter. *See* A/D converter (analog-to-digital converter)
- AND circuit, using switches, 44
- AND dot, eliminating, 96
- AND function, 44, 45
- AND gate, 43–45, 73–74, 419
- AND logic function, substituting NAND gates, 56
- AND truth table, 44
- AND-OR logic circuit, 107
- AND-OR pattern, of logic gates, 109
- Angular velocity, 291
- Anode, 221
- Antifuse FPGAs, 116
- "Any or all gate," 46
- Apostrophe symbol, as alternative NOT symbol, 48
- Arithmetic circuits, 330–356
- Arithmetic unit, of a computer, 445–446
- Arithmetic-logic unit (ALU), 330, 334, 340, 446
- AS, in a core part number, 65
- ASCII (American Standard Code for Information Interchange), 27, 202, 203
- Astable multivibrator, 10
- Astable MV, 237
- AS-TTL (advanced Schottky TTL), 148, 160
- Asynchronous counter, 264
- Asynchronous inputs, overriding synchronous inputs, 242
- Audio amplifier sections, of the digital roulette game, 319
- Audio ports, 464
- Automatic clear circuit, 319–320
- Automobile
 - alarm system, 75–77
 - driving experience enhanced by electronics, 8
 - fuel indicators, 6

B

- B421 BCD code, 196–198
- Back-and-forth (reciprocating) motion, 488, 489
- Backlighting, added to an active-matrix LCD screen, 217
- Base 2 system, 27, 34
- Base 8 numbers, 36
- Base 10 system, 27, 34
- Base 16 system, 34, 35
- Basic gate, converting to any other gate, 62
- BASIC Stamp 1 module (BS1), 477
- BASIC Stamp 2 (BS2) Microcontroller Module by Parallax, 77, 126, 128, 186–188, 404
- BASIC Stamp 2 module (BS2), 126, 477–478
 - circuit, 488, 490
 - steps in wiring and programming, 186
 - using with an ultrasonic distance sensor to measure distances, 434
- BASIC Stamp modules, 475, 477–482
- BASIC Stamp program, 488–489, 491
- BASIC Stamp programming, 479–482
- Battery backup, for a CMOS SRAM, 381
- Battery backup SRAM, 381
- Battery-operated portable devices, CMOS ICs
 - ideal for, 150
- Battery-powered soldering irons, using, 150
- Baud rate, 461
- Baudot, 202
- Buyer filter, 486, 487
- BBSRAM, 381
- BCD (binary coded decimal), 27
- BCD code, 197
- BCD decoder/driver circuit, wiring diagram of, 224
- BCD-to-seven-segment decoder, 214, 215, 218, 219
- BCD-to-seven-segment decoder/drivers, 208, 209–212
- BEL (bell), 202
- "Bent under" pin, 296
- Bidirectional shift register, 312
- Bilateral switches, 151
- BiMOS 5804 stepper motor translator/driver, 176–177
- Binary (BCD)-to-decimal decoder circuit, 42
- Binary 0, 44
- Binary 1, 44
- Binary addition, 230–231
- Binary and octal representations, for decimal numbers 1 through 17, 36
- Binary calculator, 331
- Binary code, converting to decimal numbers, 30
- Binary coded decimal (BCD). *See* BCD (binary coded decimal)
- Binary count, 263
- Binary digit, 37
- Binary equivalents, to decimal numbers, 35
- Binary multiplication, 343–344, 346
- Binary multipliers, 345–348
- Binary number system
 - counting in, 27–28
 - place value in, 28–29
- Binary numbers
 - converting from, 229
 - converting to decimal, 30
 - converting to hexadecimal, 35
 - converting to octal, 36
- Binary outputs, digital light meter using, 521
- Binary point, 29, 30
- Binary subtraction, 336–337
- Binary term, 38
- Binary-coded decimal numbers, 375
- Binary-to-Gray code converter, 370–371
- Bipolar stepper motors, 172
- Bipolar technology, families manufactured using, 62
- Bipolar TTL logic family inverter, 141–142
- Biquinary counter, 7493 IC as, 272
- Bistable multivibrator, 10, 237
- Bit, 37
- Blanking, leading zeros, 211–212
- Blanking input (BI), 209, 210
- Blinking LED 1 program, listing of, 481
- Block diagrams
 - debounced logic switch, 9
 - digital clock, 413, 419
 - digital electronic timer system, 427, 428
 - digital frequency counter, 419, 420, 421
 - digital potentiometer, 394, 396
 - digital roulette wheel, 318
 - of a full adder, 333
 - of a full subtractor, 336, 338
 - of a half subtractor, 336, 337
 - MM5314 MOS LSI clock IC, 416, 417
 - repeated addition-type multiplier system, 345
 - 2732 EPROM chip, 378
- Blood tests, requiring less blood, 277
- Board of Education (BOE), 478–479

- Boole, George, 99, 125
 - Boolean algebra, 45, 99–100, 125
 - Boolean expressions, 45
 - forms of, 91
 - for four-input OR gate, 58
 - for the OR function, 51
 - keyboard versions of, 95, 124
 - for NAND, 50
 - for the output of the XNOR gate, 55
 - simplifying, 99–100, 101
 - to truth table, 94
 - for the XNOR gate, 54
 - Borax paste, 532
 - Borrow out output, 429
 - Bounce-free switch, 180, 183
 - Boundary scan or JTAG, 438
 - Boundary-scan architecture, 438, 440
 - Boundary-scan cells (BSCs), 438, 439
 - Braun ThermoScan ear thermometer, 94
 - Breadboard wiring, of a free-running clock, 11, 12
 - BS (backspace), 202
 - BS2 microcontroller module, 406
 - Buffer memory, printer's, 460
 - Buffer register, 305
 - Buffers. *See* Three-state buffers
 - Bulk storage devices, 362
 - Bus, 362
 - Bus systems, buffer/driver used with, 49
 - Buzzers, interfacing with, 164
 - Byte, 38
- C**
- C, in a core part number, 65
 - Cache memory, in microprocessors, 364
 - Cadmium sulfide photocell, 520
 - Calculator
 - binary, 331
 - commercial, 37
 - compared to a computer, 446
 - keys on, 152
 - pocket, 31
 - scientific, 37
 - shift register in, 305
 - Calculator chips, 406
 - Carry input, 333
 - Carry out, 332
 - Cascaded decade counters, 280
 - Cascading adders, 340, 342
 - Cascading comparators, 288, 290
 - Cascading counter, 283
 - Cathode (K), 221
 - Cathode lead, of an LED, 206, 207
 - Cathode/heater, 221
 - Cathode-ray tube (CRT) technology, 215
 - CCDs (charged couple devices), 486
 - CD reader drive, 363
 - CD4081BE CMOS quad two-input AND gate IC, 66
 - CD4081BE part number, 66
 - CD-DA (CD digital audio), 363
 - CD-Es, 392
 - CD-R (compact disc recordable), 363, 390, 391–392
 - CD-ROM (compact disc read-only memory), 363, 390, 391
 - CD-RW (CD rewritable), 363, 392
 - CDs (compact discs), 363, 390
 - CdS photocell, 520
 - CdS photoresistive cell, 488, 490
 - Central processing unit (CPU), 5, 330, 362, 406, 446, 448, 449
 - Centronics standard, 461
 - Charged coupled device (CCD), 486
 - Cheetah hard disk drive, by Seagate, 388
 - Chip select control input, 370
 - Circuit board, 439
 - Circuit resistance, 6
 - Circuit simulation software, 92, 94–98
 - Circuits, constructing from Boolean expressions, 91–92
 - Circumflex accent ($\hat{}$), in the XNOR function of PBASIC, 81
 - CISC (complex instruction set computing), 475
 - Clamp diode, 165
 - Cleaning, required to remove certain types of fluxes, 534
 - Clear mode, 74194 shift register, 311, 312
 - CLK inputs, 239, 266, 293
 - Clock, digital circuits in, 10
 - Clock chips, large-scale integrated, 414
 - Clock circuit, 26
 - Clock module, 415, 416
 - Clocked R-S flip flop, 239–240
 - CLR input, of a counter, 74
 - CMOS (complementary metal-oxide semiconductor), 62
 - advantages of, 144
 - buffers, 156, 162, 163
 - circuit, troubleshooting, 71
 - counter, 276–280, 288–289, 290
 - counter ICs, 279
 - devices, 162–163
 - digital circuits, 16
 - digital ICs, 65, 66
 - driving an LCD display, 218–219
 - image sensors, 486
 - inverters, 142, 143
 - logic gates, 65–69
 - noise margin better for, 145
 - power dissipation of, 149
 - quadruple two-input AND gate IC, 66
 - RAMs, 381
 - shift registers, 315
 - SRAM, 381
 - TMS47C512 TOM, 374
 - XOR gates, 214, 215
 - CMOS ICs, 62, 150–151
 - advantages of, 150
 - caution against static charges, 68
 - damaged by static charges, 66
 - disadvantages of, 150
 - families of compatible, 66
 - handling, 150
 - interfacing with TTL, 160–163
 - storing, 150
 - subfamilies, 67–68
 - with a "T" designator, 142
 - CMOS-to-LED interfacing, 156
 - Code conversions, with software, 33
 - Code converter, 370
 - Codes, converting from several, 229
 - Coefficients, 485
 - Collector of electrons, in the triode tube, 221
 - Color LCDs, 215–217
 - Combinational logic, 90
 - Combinational logic circuits, 90, 208, 236, 335, 355
 - NAND gates used in wiring, 106
 - using logic gates, 376
 - Combinational logic designs, PLDs implementing, 121
 - Combinational logic problems, solving, 90–91, 126
 - Commercial calculators, converting between number systems, 37
 - Commercial frequency counters, 425
 - Commercial grade, 63
 - Commercial LCDs, 214–215, 216
 - Commercial monochrome LCDs, 215, 216
 - Commercial ROMs, in DIP form, 372, 374 /
 - Commercial vacuum fluorescent display, 222, 223
 - Common cathode form, 207
 - Common-anode seven-segment LED display, 207
 - Communications, in orbit, 70
 - Compact data storage, 339
 - Compact low-voltage ICs, 68
 - Comparator, 507–508
 - Complement, of actual memory contents, 367
 - Complementary metal-oxide semiconductor (CMOS). *See* CMOS (complementary metal-oxide semiconductor)
 - Complementary outputs, 13, 236
 - Complementary symmetry metal-oxide semiconductor (CMOS) devices, 150
 - Complementary symmetry metal-oxide semiconductor (CMOS) ICs, 160
 - Complementing, 4-bit binary number, 32
 - Computer bulk storage devices, 387–394
 - Computer connections, to networks, 448–449
 - Computer mouse, 211
 - Computer simulations, logic converter, 108–111
 - Computer systems, 445–491
 - data transmission in, 464–468
 - flow of program instructions and data in, 446–447
 - Computers, 445–446
 - on a chip, 451, 473
 - memory devices in, 362–363
 - photographic history of, 4
 - Conductive foam, 150
 - Contact bounce, in a mechanical switch, 9
 - Contents section, of the program memory, 450
 - Continuous rotation, of a stepper motor, 174
 - Control and arithmetic units, 447
 - Control block, in a UART, 460
 - Control bus, 362
 - Control devices, microcontrollers as, 474
 - Control functions
 - of digital systems, 403, 404
 - performing by microcomputers, 473
 - Control input, extra, 49
 - Control register, 466, 467
 - Control section
 - of boundary-scan architecture, 438
 - of a computer, 446
 - Control sequences
 - for sample bipolar stepper motors, 172, 174
 - used by the MC3479 IC, 176
 - Conversion options, for a logic converter, 108–109
 - Conversion time, of an A/D converter, 517
 - Core part number, internal letters in, 65
 - Corrosion, on metal surfaces, 530
 - Count accumulator section, of a clock, 412
 - Count or sampling time, 425
 - Count pulse, 420, 421
 - Count/display waveform, 423
 - Count-display-reset procedure, repeating, 421
 - Counter stop line, 429
 - Counter subsystem, 414
 - Counter system, using optical encoding, 286
 - Counterclockwise (CCW) rotation, 172, 174
 - Counter-ramp A/D converter, 508
 - Counters
 - described, 262
 - formed by flip-flops, 236
 - as frequency dividers, 270–271
 - as heart of a digital system, 412
 - J-K flip-flop in, 246
 - troubleshooting, 295–297
 - Counting, real-world events, 284–287
 - Count-up pulse, 294
 - CPLD (complex programmable logic device), 116
 - CPU (central processing unit), 5, 330, 362, 406, 446, 448, 449
 - CR (carriage return), 202
 - CRC-8 system, 463
 - CRC-16 system, 463
 - CRC-32 system, 463
 - CUPL software, 116
 - Current sinking, 156–157, 158
 - Current sourcing, 156–157, 158
 - CW rotation, 172, 174
 - Cycles, displaying, 21
 - Cyclic redundancy check (CRC), 462–463
 - Cylinders, number of, 389
- D**
- D flip-flops, 241–243, 308
 - delaying data, 242
 - serial-load shift register using, 307
 - use of eight with parallel data outputs, 315
 - used to latch data, 248
 - wiring, 242

- D latch symbol, 249, 250
 - D/A converter (digital-to-analog converter), 483, 499, 500–501
 - circuit, 503
 - parts of, 501
 - sections of, 502–503
 - truth table for, 500, 504
 - truth tables, 506
 - Dark burned areas, reflecting less light, 392
 - DAT (digital audiotape), 393
 - Data
 - ability to store, 361
 - to be acted on by a computer, 446
 - sent over a single wire in serial form, 457
 - Data bus, 362, 448
 - Data flip-flops, 242
 - Data inputs, 112, 367
 - Data links, 460
 - Data memory, 448, 474, 485
 - Data selectors, 112, 113–114, 458
 - Data transfer rate, of a CD-ROM drive, 390
 - Data transmission, 457–461
 - in a computer system, 464–468
 - examples of, 460, 465–468
 - Data transmissions, detecting errors in, 461–463
 - Data-enabled mode, for 7475 latch IC, 248
 - Data-latched mode, for 7475 latch IC, 248
 - DB9 connector, 478, 479
 - DB-1000 display board, 14
 - De motor, noncontact operation of, 436
 - De voltage, across nematic fluid destroying LCDs, 214
 - De Morgan, Augustus, 126
 - De Morgan's theorems, 61, 124–128
 - Debounce logic switch, block diagram of, 9
 - Debounce switches, 11–12, 153
 - Debouncing circuit
 - adding, 11
 - eliminating switch bounce, 12
 - lack of, 153
 - use of, 9
 - Decade counter, 264, 270, 271
 - Decade down counter, 74192 IC wired as, 275
 - Decimal multiplication, compared to binary multiplication, 343–344
 - Decimal number system, 27, 28, 29
 - Decimal numbers
 - converting from, 229
 - converting to BCD numbers, 375
 - converting to binary, 30–31
 - converting to hexadecimal, 35
 - converting to octal, 36
 - having 2s complements same as binary, 350
 - Decimal-output A/D converters, 516, 517
 - Decimal-to-binary conversion, 196–197
 - Decimal-to-binary encoder circuit, 41
 - Decode (verb), defined, 32
 - Decoder/driver, 429
 - Decoders, 31, 32–33, 196, 208–209, 458, 499
 - Decoding, 196, 412
 - Decoding circuit, troubleshooting, 227–228
 - DEL (delete), 202
 - Delay flip-flop, 241, 242, 308
 - Delay period, adjusting, 12, 155
 - Demultiplexers (DEMUXs), 457
 - Dependency notation, 72
 - Development software, for PLDs, 116
 - Dice simulation, more realistic, 407, 409–411
 - Digital audiotape (DAT), 393
 - Digital cameras
 - compressing digital images, 487
 - DSP in, 486–487
 - solid-state drives, 363–364
 - using flash memory cards, 363
 - Digital circuitry, 1, 3
 - Digital circuits, 2, 4–8
 - Digital clock, 412–415
 - block diagram of, 413, 419
 - chips, 415
 - switches on, 152
 - Digital computers
 - as backbone of the Internet, 7
 - functional sections, 445–446
 - Digital device, operating with a digital signal, 2
 - Digital dice game, simple, 407, 408
 - Digital electronic equipment, codes used in, 196
 - Digital electronic timer system, 427, 428
 - Digital electronics, applications of, 8
 - Digital frequency counter
 - block diagram of, 419, 420
 - experimental, 422
 - more detailed block diagram of, 421
 - Digital games, 407–411
 - Digital ICs
 - CMOS technology used in, 151
 - data manuals from manufacturers, 65
 - low-cost reliable, 7
 - specifications of, 146
 - Digital light meter, 520–521
 - Digital light meter circuit, 522
 - Digital logic pulser, 295
 - Digital measuring device, 2–3
 - Digital multimeter (DMM), 2–3
 - Digital potentiometer, 394–397
 - Digital roulette, using shift registers, 318–323
 - Digital roulette wheel, 318, 322
 - Digital roulette wheel circuit, 321
 - Digital signal processing (DSP), 482–485, 486–487
 - Digital signal processor (DSP), 483
 - Digital signals, 2–3
 - displayed on scope, 2
 - engine control module sending, 6
 - generating, 2, 9–14
 - testing for, 15–18
 - waveform, 2
 - Digital subscriber line (DSL), 449
 - Digital systems
 - elements of, 403–404, 405
 - on ICs, 406
 - inputs and outputs from, 284
 - measuring amount of liquid in a water tank, 5
 - requirements for, 5
 - using encoders, 204–205
 - Digital timepieces, frequency dividers in, 270
 - Digital trainer, used during lab sessions, 14
 - Digital versatile disc (DVD), 363
 - Digital voltmeter, 510–512
 - Digital waveform, providing, 9
 - Digital-to-analog (D/A) converter. *See* D/A converter (digital-to-analog converter)
 - Digital-to-analog conversion block, 487
 - Digitizing, 523
 - temperature, 523–524
 - Digitizing process, faster for successive-approximation A/D converter, 515
 - DIMM (dual in-line memory module), 385, 386
 - Diode ROM matrix, pattern of diodes in, 372, 373
 - Diode ROMs, disadvantages of, 372
 - DIP (dual in-line package), 62–63, 205, 384, 385, 474
 - Discrete points, in time, 483
 - Discrete-time signals, 483
 - Disk drive, electromagnetic device, 387
 - Display, seven segments of, 205
 - Display blanking, during the count time, 425
 - Display clock, 429
 - Display driver, 207
 - Display multiplexer circuit, 280
 - Display multiplexer section, of the 4553 IC, 293, 294
 - Display technologies, 206
 - Display time, 425
 - DisplayPort digital display interface, 464
 - Displays, multiplexing, 294, 416
 - Distance sensing, simple, 432–437
 - Distance sensor
 - noncontact operation with, 435–437
 - testing, 434
 - using for noncontact operation of a stepper motor, 435
 - Distributors, 458
 - Divide-by-6 counter, 423
 - Divide-by-10 counter, 270, 423
 - Divide-by-60 counter circuit, 270, 271, 413, 414
 - Divide-by-60 frequency divider, 413, 414
 - Divide-by-256-counter block, 427
 - DM7408N part number, 63
 - DMM (digital multimeter), using a modern LCD, 213, 214
 - Double inverting, effect of, 48
 - Double-word, 38
 - Down counters, 267–268, 269, 427, 429
 - Down position, switch in, 63
 - Drain supply, in MOSFET, 151
 - DRAM (dynamic random-access memory), 364, 366
 - Drive capabilities, of digital ICs, 146–148
 - Drive current, supplying greater at its output, 48
 - DS1620, in conjunction with a microcontroller, 524
 - DS1804 NV trimmer potentiometer IC, 394–395, 396
 - DSL (digital subscriber line), 449
 - DSP
 - architecture of, 484, 485
 - in a digital camera, 486–487
 - DT-1000 digital trainer board, 14
 - D-type latches, 243
 - Dual circuitry, advantages and limitations, 7
 - Dual in-line package (DIP), 62–63, 205, 384, 385, 474
 - DVD (digital versatile disc), 363
 - DVD+RW (digital versatile disc rewritable), 390
 - DVD-audio, 363
 - DVD-R (digital versatile disc recordable), 390
 - DVD-RAM, 363, 392
 - DVD-ROM (digital versatile disc read-only memory), 363, 390–391
 - DVD-ROM drives, data transfer rate, 391
 - DVD-RW (digital versatile disc rewritable), 390, 392
 - DVD-video (digital video disc), 363
 - DVI (digital visual interface) port, 464
 - DVI-A, 464
 - DVI-D, 464
 - Dynamic RAM IC, 368
- ## E
- EBCDIC (extended, binary-coded decimal interchange code), 202
 - ECL (emitter-coupled logic), 149
 - EDE1200 unipolar stepper motor IC, 176
 - Edge-triggered flip-flops, 249
 - EEPROM (electrically erasable programmable read-only memory), 364, 377–378, 477
 - memory cells, 392
 - program memory, 77, 80
 - Egyptians, soldering developed by, 530
 - EIA RS-232C standard, 461
 - 8-bit 2s complement
 - addition problems, 351, 352
 - of a number, 350
 - subtraction problems, 351, 352
 - 8-bit binary adder, 340
 - 8-bit CMOS shift register, 315–317
 - 8-bit parallel-load shift-right register, 314–315
 - 8-bit register, 237, 305
 - 8-bit XOR gate, 462
 - 8-bit-magnitude comparator, 429
 - 8-pin DIP DS1620 digital thermometer and thermostat IC, 524
 - 8255 PPI (programmable peripheral interface), 460
 - 8421 BCD code, 197, 229
 - 8421 code, most widely used BCD code, 198
 - Electromechanical relays, 167
 - Electronic circuit simulators, running on a PC (personal computer), 108
 - Electronic devices, translating from decimal to binary numbers and from binary to decimal, 31
 - Electronic dice simulation game, explaining logic and output sections of, 409, 411
 - Electronic distance sensors, categorized, 432
 - Electronic encoder-decoder system, 247

- Electronic engine control, 8
 - Electronic games
 - classifying, 407
 - CMOS counter in, 288–289, 290
 - constructing, 407
 - Electronic lock, designing, 97
 - Electronic roulette wheel, summary of, 319
 - Electronic thermometers, 94
 - Electronic translators, 31–33
 - encoders and decoders, 196
 - Electronics technicians and engineers, in great demand, 8
 - Electronics Workbench (EWB), 95
 - Elements, of a digital system, 403–404, 405
 - ELPD (electrically programmable devices), 116
 - Emitter-to-collector resistance, of the power transistor, 167
 - Encode (verb), defined, 32
 - Encoder, 31, 32–33, 196, 499
 - Encoder-decoder system, 32–33
 - Encoders and decoders, in digital systems, 204–205
 - Encryption, 32, 196
 - Engelbart, Douglas, 211
 - Engine control module (ECM), 6
 - Enhancement-mode MOSFETs, 150
 - Eniac, 4
 - EPROM (electrically programmable read-only memory), 364, 380
 - EPROM (erasable programmable read-only memory), 377
 - EPROM family, 378
 - EPROM window, protecting, 380
 - EPROM/ROM-based 8-bit CMOS microcontroller series, 474
 - Epson 40- or 50-pin interface, 387
 - Erasable PLD units, 121
 - Erasable-CDs, 392
 - Erasing, memory, 371
 - Error detector circuit, sounding an alarm, 462
 - Error-correcting codes, 463
 - Errors, detecting in data transmission, 461–463
 - Ethernet port, 465
 - Ethernet protocol, 450
 - Eutectic solders, 530
 - Eutectic alloys, 530
 - Eutectic solder, as preferred choice, 531
 - Even or odd parity bit, transmitted or received, 462
 - Excess-3 code, 198–199, 229
 - Exclusive NOR gate, 54–55
 - Exclusive OR gate, 53–54
 - Experimental frequency counter, 423–425
 - Experimental LCD timer circuit, wiring diagram for, 427, 430–431
 - Experimental tachometer, 291–294
 - Experiments Manual for Digital Electronics*, 8
 - External hard disk drives, 363
 - External pulse width, 170
 - External storage, 387–388
 - Extast (external test) instruction, for JTAG-compliant ICs, 439
- F**
- F, in a core part number, 65
 - FACT (Fairchild Advanced CMOS Technology) 74AC00 series, 66
 - FACT (Fairchild Advanced CMOS Technology) CMOS ICs
 - designed to outperform existing CMOS and most bipolar logic families, 151
 - interfacing with other families, 162
 - logic series, 67, 151
 - more tolerant of static discharge, 150
 - output drive capabilities, 161, 162
 - outstanding output drive capabilities of, 147
 - rivaling the best TTL ICs in low propagation delays, 149
 - Families, of digital ICs, 62
 - Fan-in, of a family of ICs, 147
 - Fan-out, of a digital IC, 146
 - Fast set, 416
 - FAST TTL logic series, 147
 - Fast-forward set, 413
 - FCT, in a core part number, 65
 - Feedback resistor, 502
 - Ferroelectric capacitor, with a MOS transistor, 383
 - Ferroelectric RAM (FeRAM or FRAM), 382–384
 - Fetch-decode-execute sequence, 453, 467
 - Field-effect LCD, 213, 214
 - Field-programmable logic arrays (FPLAs), 116, 121
 - Field-programmable ROMs (PROMs), 377
 - 50/50 solder, 530
 - Filament, 221
 - Fillet shape, of solder, 534
 - Filter, purpose of, 486
 - FireWire, 465
 - Firmware, 374
 - 555 timer IC
 - in a clock, 520
 - switch debouncing circuit using, 155
 - triggering, 436
 - wired as a VCO, 319, 321
 - Five-variable Karnaugh map, 105
 - Five-variable unsimplified Boolean expression, 105
 - Fixed angle, 172, 173
 - Flagged error, 468
 - Flags, in the status register, 468
 - Flash drives, 361
 - Flash EEPROMs, 378, 381, 382
 - Flash memories, 363
 - Flash memory, 361, 364, 381, 382, 387
 - Flip-flops, 9, 13, 236
 - constructing latches using, 305
 - memory characteristics, 240, 306, 315
 - operating synchronously, 239
 - in semiconductor memories, 361
 - traditional and IEEE symbols for, 253
 - triggering, 249–250
 - uses of, 248
 - Floating inputs
 - caused by a bent-under pin, 297
 - on CMOS ICs, 71
 - good design practice for, 211
 - on TTL, 152
 - Floating output, from a digital circuit, 18
 - Floppy disk drives, 363, 390
 - Floppy disk form, 388
 - Floppy disks, 389, 390
 - Flux
 - removal of, 534
 - role of, 531–532
 - FOR-NEXT loops, 188
 - Four full adders, use of, 353
 - 4-bit adders, functioning the same as the 7483 IC, 340
 - 4-bit binary counter, logic diagram for a 74HC393 IC wired as, 279
 - 4-bit counter, 264
 - 4-bit electronic counter, counting sequence for, 263
 - 4-bit microprocessor-based system, 455
 - 4-bit MPU-based system, 454, 455
 - 4-bit parallel subtractor, 338–339
 - 4-bit parallel-load recirculating shift register, 309
 - 4-bit ripple counter, 7493 IC as, 272
 - 4-bit shift register, 307
 - 4-digit BCD counter, 291
 - Four-input AND gate, wiring, 58
 - Four-input NAND circuit, schematic diagram of, 185
 - Four-input NAND gate, wiring, 59
 - Four-input NOR gate, 423
 - Four-input OR gate, wiring using two-input OR gates, 58–59
 - 4N25 optoisolator, 167
 - Four-phase stepper motors, 176
 - 14-pin DIP IC, 62
 - 4000 series, 151
 - 4000 series CMOS devices, interfacing with simple LED indicator lamps, 156, 157
 - 4000 series CMOS ICs, 66, 142, 143, 155
 - fan-out for low-power, 146
 - propagation delays of, 149
 - voltages for, 66
 - voltages up to 18 V, 224
 - 4029 presettable binary/decade up/down counter, 409
 - 4050 noninverting buffer, 161
 - 4081B CMOS IC, 66
 - 4511 BCD-to-seven-segment decoder IC, digits generated by, 225, 226
 - 4511 BCD-to-seven-segment latch/decoder/driver CMOS IC, 224–226
 - 4511 BCD-to-seven-segment latch/decoder/driver IC, pin diagram, 225
 - 4553 (MC14553) CMOS three-digit BCD counter, 280–283
 - 4553 three-digit BCD counter, CLK input of, 293
 - 40106 CMOS IC, special inverter, 155
 - Four-variable Karnaugh map, 103
 - Four-wire bipolar stepper motor, test circuit for hand checking, 174–175
 - FPGA (field-programmable gate arrays), 116
 - FPL (fuse-programmable logic), 116
 - FPLAs (field-programmable logic arrays), 116, 121
 - FRAM (ferroelectric RAM), 364, 381
 - Framing-error (FE) flag, 468
 - Free-running A/D converter, 519
 - Free-running clock circuit, 11
 - Free-running multivibrator, 10
 - Free-running MV, 10
 - Frequency
 - of input voltage, 21
 - selecting, 19
 - Frequency counter, 419–422
 - Frequency counter circuit, 74
 - Frequency divider section, of a clock, 412, 413
 - Frequency dividers, counters as, 270–271
 - Frequency division, 270–271
 - Fuel gauge system, traditional analog, 6
 - Full adder circuit, 332
 - Full adders, 333–334, 355–356
 - Full subtractors, 336, 338
 - Full-duplex devices, 465
 - Full-step mode, 176
 - Function diagram, 276, 277
 - of the 74HC193 IC, 277, 278
 - Function generator, 19
 - Fuse maps, 120
 - Fusible-link PROM, 377
- G**
- GAL (generic array logic), 116, 122
 - Gallium arsenide (GaAs), LEDs fabricated from, 207
 - Gallium arsenide (GaAs) infrared-emitting diode, 167
 - Gas-discharge tube, 206
 - Gate circuits, troubleshooting, 69–71
 - Gates
 - with more than two inputs, 57–59
 - using inverters to convert, 59–62
 - Gateways, 450
 - GB (gigabytes), 38, 363
 - Gear-tooth sensing ICs, 182–183
 - Generator, producing a square waveform, 2
 - Geostationary earth orbit (GEO), 70
 - Gigabytes (GB), 38, 363
 - GND connection, 151
 - Graph form, analog and digital signals representing, 2
 - Gray, Frank, 199
 - Gray code, 27
 - converting from, 229
 - numbers from 0 to 15, 370
 - programming into the 7489 RAM, 370
 - used for input and output devices in digital systems, 199
 - Gray code-to-binary decoder, 200
 - Green, human eye more sensitive to, 487
 - Grid (G), 221
 - Guess the number computer game, 288

- H**
- H, in a core part number, 65
 - H21A1 optocoupled interrupter module (slot type), 285
 - Half adders, 332, 334
 - Half subtractors, 336
 - Half-adder circuit, 332
 - Half-byte, 38
 - Half-step mode, 176
 - Hall, E. F., 179
 - Hall effect, 179
 - Hall voltage, proportional to the strength of the magnetic field, 178
 - Hall-effect sensors, 178–184
 - basic, 178–179
 - with a dc amplifier and voltage regulator, 179
 - input pulses from, 291
 - Hall-effect switch (3141 IC), 293
 - Hall-effect switch IC, 182
 - Hall-effect switches, 179–182, 184
 - Hamming code, 463
 - Handshaking line, 460
 - Hard disk drives (HDDs), 363, 448
 - Hard disks, 388–389, 393
 - Hard drives, 363
 - Hard logic, using traditional ICs, 90–91
 - Hardware
 - encoding and decoding performed by, 31
 - needed to program the BASIC Stamp Microcontroller Module, 77, 78
 - Hayes, Dennis C., 447
 - Hayes Microcomputer Products, Inc., 447
 - Hayes Smartmodem, 447
 - HC, in a core part number, 65
 - HCT, in a core part number, 65
 - Heart cycle, controlling, 532
 - Heat rate recognition, 533
 - Heat reservoir, replenished by the heating element, 532–533
 - Heater, 221
 - Heavy-duty computer system, designed for machine control, 469
 - Hexadecimal equivalents, to decimal numbers, 35
 - Hexadecimal notation, representing a binary number, 34
 - Hexadecimal number system, 27, 34
 - Hexadecimal numbers, 34–35
 - HIGH input, 66–67, 142
 - HIGH input input, 141
 - HIGH logic level, for a CMOS inverter, 142, 143
 - HIGH output, 53, 142
 - HIGH voltage, 2, 16, 37, 44
 - High-capacity DVD versions, of the CD-RW, 392
 - High-impedance state, buffer outputs in, 454
 - High-impedance state (high-Z state), 49
 - High-reliability soldering, 530
 - High-speed CMOS (HC), 67
 - Hobby servo motor. *See* Servo motor
 - Hold condition, for the flip-flop, 237
 - Hold input, 416
 - Hold mode, 239, 243, 244, 267
 - Hollerith, Herman, 388
 - Hollerith card code, 202, 388
 - HomeWork board, 479
 - Horizontal sweep time knob, on a scope, 20
 - Hybrid electronic system, 512
 - Hybrid hard disk drive (H-HDD), 388, 393
 - Hybrid RAM disks, 388
 - Hybrid system, 499
 - Hysteresis, 251, 523
- I**
- IC adders, 340–342
 - IC forms, of MV circuits, 11
 - IC latches, 247–248
 - IC programmer, burning open selected fuses, 118
 - ICL7106 3½-digit A/D converters, 512
 - ICL7107 3½-digit A/D converters, 512
 - ICs. *See* Integrated circuits (ICs)
 - Idle mode, in clocked R-S flip-flops, 239
 - IEEE logic symbols, 72–73, 252–253
 - IEEE-488 standard, 461
 - IEEE-1149.1 standard, 438
 - IFL (integrated fuse logic), 116
 - IGFETs (insulated-gate field-effect transistors), 62
 - Image capture section, of a digital camera, 486
 - Incandescent display, 206
 - Incandescent lamp, interfacing, 159
 - Inclusive OR function, 46
 - Information, put into a computer, 446
 - Information revolution, 361
 - Infrared light, optocoupled interrupter module using, 287
 - Infrared-emitting diode, 169, 287
 - Infrared-light distance sensor, 432, 433
 - Inhibit mode, 74194 shift register, 311, 312
 - Initial wiper position, stored in nonvolatile EEPROM, 395
 - Input
 - of a digital system, 403, 404
 - inverting, 59–60
 - provided by a simple SPDT switch, 15
 - Input and feedback resistors, 502
 - Input controls, 426, 427
 - Input devices
 - to computers, 445
 - connected to microcomputers, 448
 - for PLCs, 469
 - Input loading characteristics, of several families of digital ICs, 147
 - Input resistor, 502
 - Input shaft, speed of rotation of, 294
 - Input signals, 15, 21
 - Input switch
 - of BS2 module, 481
 - with a debouncing circuit, 11
 - Input unit, 447
 - Input voltage range, 517
 - Input waveforms, 237, 238
 - Input/output peripheral device, 449
 - Input-store-output procedure, 450–451
 - Installation, of a typical DIMM, 385, 386
 - Institute for Electrical and Electronic Engineers (IEEE). *See* IEE specific entries
 - Instruction register, 438, 452
 - Instruction set, for a specific PLC, 470
 - Instruments
 - simple, 19–21
 - used in the lab, 8
 - Insulated-gate field-effect transistors (IGFETs), 62
 - Integrated circuits (ICs)
 - containing entire digital systems, 406
 - digital electronic signals generated and processed by, 2
 - interfacing between TTL and CMOS devices, 142
 - manufacturers producing encoders and decoders, 32
 - packaging, 62–63, 66
 - part numbers, 63, 65
 - from the same logic family interfacing properly, 141
 - troubleshooting, 71
 - used to construct digital circuits, 43
 - wiring, 63, 64, 66–67
 - Integrated fuse logic (IFL), 116
 - Intel 4004 4-bit microprocessor, 37
 - Interconnections (nets), checking, 440
 - Interface devices, 499
 - Interfacing
 - analog devices to digital systems, 499
 - with buzzers, 164
 - defined, 141
 - with servo and stepper motors, 170–177
 - TTL and CMOS ICs, 160–163
 - TTL and CMOS with LEDs, 156–159
 - TTL and CMOS with switches, 152–155
 - using relays, 165, 166
 - Internal short circuit, of a chip, 228
 - Internet, 7, 449
 - Internet servers, 363
 - Interpolation, 487
 - Invalid BCD inputs, generating unique outputs on the 7447A decoder, 211
 - Invert bubbles, 50, 51
 - added to the inputs of the OR gate, 61
 - at the input of the AND gate, 61
 - on the left side of the inverter symbol, 48, 49
 - at the R and S inputs, 237
 - replaced with a right triangle on IEEE symbols, 73
 - Inverted AND function, 50
 - Inverted binary form, 254
 - Inverter logic function, substituting NAND gates, 36
 - Inverters, 48
 - adding to a logic symbol, 61
 - adding to the output of the AND gate, 61
 - attached to the inputs of the OR symbol, 61
 - complementing or inverting the input, 48
 - truth table for, 48
 - using at the inputs and outputs, 62
 - using to convert gates, 59–62
 - Inverting
 - 4-bit binary number, 32
 - CMOS buffer, 156
 - outputs of the AND gate, 50
 - Inverting input, to an op amp, 501
 - IR detector (phototransistor), 432
 - IR LED, emitting pulses of infrared light, 432
- J**
- J-K flip-flops, 243–247
 - shift register using four, 309
 - in toggle mode or hold mode, 267
 - J-K master/slave flip-flop, 250
 - Joint, controlling heat at, 532–533
 - Joint Test Action Group (JTAG), 438
 - JPEG (Joint Photographic Experts Group), 487
 - JTAG-compliant ICs, 438, 440
- K**
- Karnaugh, Maurice, 100
 - Karnaugh map (K map)
 - considering as a vertical cylinder, 104
 - filled in, 100
 - five-variable, 105–106
 - forming four corners into a ball, 105
 - with four variables, 103
 - more sample, 104–105
 - simplifying a Boolean expression from, 101
 - with three variables, 101–102
 - Keyboard, entering information, 152
 - Keyboard port, 464
 - Keyboard versions, of Boolean expressions, 95, 124
 - Kilobytes, of storage, 38
- L**
- L, in a core part number, 65
 - Label, in PBASIC, 79, 128
 - Ladder logic diagram, graphic programming language, 470
 - Ladder-type D/A converters, 504–505
 - LANs (local area networks), 449–450
 - Laptop computers, 4
 - Large-scale integration digital voltmeter chips, 512
 - Large-scale integration (LSI), 406
 - Laser narrow light beam, for distance sensing, 432
 - Latch/decoder/driver, 426, 427
 - Latched encoder-decoder system, 254–256
 - Latch-enable circuitry, 254
 - Latch-enable pulse, 254
 - Latches, 154, 236, 237, 247, 305
 - available in all logic families, 248
 - flip-flops, 9
 - groups of, 237
 - in IC form, 248
 - transparent, 283
 - LCD decoder/driver system, 218, 219
 - LCD displays, CMOS driving, 218–219
 - LCD timer, with alarm, 426–429, 430–432

- LCDs, driving, 214, 215
- Lead (Pb), melting point of pure, 530
- Lead mass, variations in, 532
- Lead-free solder joints, inherently dull and grainy, 531
- Lead-free solders, mandated for many manufacturing and repair procedures, 530
- Leading zeros, blanking, 211–212
- Least significant bit (LSB), 197, 262
- Least significant digit (LSD), 35, 262
- LED (light-emitting diode), 15, 156, 206–207
 - compared to LCD, 213
 - flashing on and off, 479
 - interfacing TTL and CMOS with, 156–159
 - interfacing using a transistor driver circuit, 158
 - as number markers, 318
 - as output indicator, 44
 - with a series-limiting resistor, 16
- LED 1 program, 481, 482
- LED output indicators, 16, 159
- LF (line feed), 202
- Light-dependent resistor (LDR), 520
- Limit switches (LS), connected in parallel and in series, 471–472
- Linear thermal sensors, 524
- Liquid-crystal displays (LCDs), 206, 213–217
- Load mode, 74194 shift register, 311, 312
- Logic circuits
 - drawing from a maxterm Boolean expression, 92–93
 - groups of, 236
 - for the parity bit generator, 462
 - troubleshooting simple, 185–186
- Logic converter, 95, 108
- Logic converter instrument, 95, 97–98
- Logic converter software, 98
- Logic diagrams
 - of the 74194 shift register, 311, 312
 - for a full adder, 333, 334
- Logic families, availability of, 141
- Logic functions, 43, 45
 - programming, 80–81
 - using software, 77–81
- Logic gates, 43, 44, 45, 236
 - applications, 73–77
 - combining, 90–130
 - summary of basic, 82
 - symbols, 72
- Logic levels
 - CMOS logic families, 142–143
 - in graphic form, 16
 - low-voltage CMOS, 143–144
 - TTL logic family, 141–142
- Logic probe, 17, 19–20, 185–186
- Logic problems, solving using data selectors, 113–114
- Logic switches, using in the laboratory, 10
- Logic symbol
 - for a clocked R-S flip-flop, 239
 - for commercial D flip-flop, 242
 - common alternative, 61
 - for the D flip-flop, 241
 - for a D flip-flop using negative-edged triggering, 249, 250
 - for a D flip-flop with positive-edge triggering, 249, 250
 - for the OR gate, 46
 - for the inverter (NOT circuit), 48
 - for J-K flip-flop, 243, 244
 - for the NOR gate, 51, 52
 - showing the AND gate, 43, 44
 - for three-state buffer, 49
 - for the XNOR gate, 54
- Logic symbol diagram, for a half adder, 332
- Logical ANDing, ways to express, 45
- Logical NANDing, expressing, 50
- Logical NORing, ways to express, 52
- Logical ORing of two variables, 46
- Logical XNORing, of three variables, 55
- Long overbar, 61
- Looping, on a Karnaugh map, 100
- Looping cylinder, 106
- LOW, HIGH, LOW, HIGH waveform, 9, 10
- LOW input, 66, 141, 142
- LOW logic level, for a typical CMOS inverter, 142, 143
- LOW voltage, 2, 16, 37, 44
- Low-cost PALs, with fusible links, 122
- Low-earth orbit (LEO), satellites in, 70
- Lower-voltage 3-V chips (ICs), 68
- Lower-voltage ICs, 68–69
- Low-power Schottky (LS), 63
- Low-voltage CMOS IC, 143, 144
- Low-voltage digital ICs, subfamilies, 69
- LS, in a core part number, 65
- LSB (rightmost digit), 330
- LSI chips, examples of, 406
- LSI digital clock, 415–418
- LS-TTL, driving any CMOS gate, 160
- LS-TTL gates, fan-out of, 148
- ## M
- Machine language, decoding to decimal numbers, 205–206
- Machine-control language, for PLCs, 470
- Magnetic bulk storage devices, 388
- Magnetic devices, 388
- Magnetic disks, 388
- Magnetic domains, in metal-oxide surface, 363
- Magnetic drum memory units, 388
- Magnetic field, characteristics of, 180
- Magnetic random-access memory (MRAM), 364, 384
- Magnetic storage, 363
- Magnetic tape, 388
- Magnetic tunnel junction (MTJ) structure, 384
- Magnetically activated sensors or switches, 178
- Magnetoresistive RAM (MRAM), 364, 384
- Magnitude comparator, 288, 426, 427
- Mainframe computer, 4
- Mask-programmed ROM, 372, 377
- Master reset input
 - to the 74HC164 IC, 315, 316
 - to the 74HC164 register, 320
- Master reset mode, of operation, 283
- Master/slave triggering, obsolete, 250
- Master/slave type, of flip-flop triggering, 250
- Maximum frequency, increasing, 421
- Maximum power dissipation, 517
- Maxterm Boolean expression, drawing a circuit from, 92–93
- Maxterm expressions, 93, 125
- Maxterm form, 92
- Maxterm-to-minterm Boolean expression, converting, 124
- Maxwell 36- or 38-pin interface, 387
- MC3479 stepper motor driver IC, 175–176
- Mechanical bulk storage devices, 388
- Mechanical devices, 388
- Mechanical switches, debouncing, 9
- Medical field, devices in, 277
- Medium-earth orbit (MEO), satellites in, 70
- Medium-scale integration (MSI), 406
- Megabytes, of storage, 38
- Memory
 - erasing, 371
 - organization of, 365
 - overview of, 362–364
 - reading from, 362
 - writing in, 362
- Memory cards, 363, 386
- Memory characteristic, of the clocked R-S flip-flop, 240
- Memory devices
 - in computers, 362–363
 - formed by flip-flops, 236
 - needed to hold BCD code, 247
- Memory enable input, 367
- Memory map, of an MPU-based system, 455–456
- Memory packaging, evolution of, 384–387
- Memory section, of a computer, 445
- Memory units, 447
- Metal-oxide semiconductor circuits, 150
- Metal-oxide semiconductor field-effect transistor (MOSFET), 150
- Metal-oxide semiconductor (MOS) technology, 62, 150
- Microchip Technology, family of microcontrollers, 474
- Microcomputer, 447–450
 - address, decoding, 454–457
 - keyboard on, 152
 - operations, 450–454
 - ROM, 448
- Microcontrollers, 330, 406, 451, 473–475
 - digital inputs, 516
 - family of, 474–475
 - responding to a variety of inputs, 481
- Microprocessor-based systems, hexadecimal notation widely used in, 34
- Microprocessors, 330, 406, 447. *See also* MPU
 - microcontrollers compared to, 473–474
 - multiplication and, 348
- Military, advanced electronics training programs, 8
- Millions of instructions per second (MIPS), 484
- Minterm Boolean expression
 - constructing a truth table from, 94
 - forming for the electronic lock circuit, 97
- Minterm expressions, creating AND-OR logic circuits, 93
- Minterm form, 91–92
- Minterm-to-maxterm form, converting, 124
- MM5314 digital clock IC, functional description of, 416, 418
- MM5314 MOS LSI clock IC, block diagram of, 416, 417
- Mod-6 counter, 270
 - 74HC193 CMOS IC as, 279
- Mod-8 asynchronous down counter, logic diagram of, 267–268
- Mod-10 ripple counters, 264–265
- Mod-16 counter, 262–263
- Mod-16 ripple counter, 272
- Mod-B counter, 7493 IC wired as, 275
- Mode control inputs, 313
- Modem (modulator/demodulator), 449
- Modulo-16 (mod-16) counter, 262
- Modulus, of a counter, 262
- Molecules, magnetizing single, 339
- Monochrome LCD, 213–214
- Monostable multivibrator, 10, 12–14
- Monostable MV, 237
- MOS ICs, 150
- MOS LSI chip, 415
- MOS LSI clock IC packaged in a 24-pin DIP, 415, 416
- Most significant bit (MSB), 262
- Most significant digit (MSD), 37, 262
- Mousse port, 464
- MPU, 452, 453. *See also* Microprocessors
- MPU IC, 447–448
- MPU-based systems, 453, 454
- MRAM (magnetoresistive RAM or magnetic RAM), 364, 384
- MSB (leftmost digit), 330
- MSBs, of positive 2s complement numbers, 348, 349
- μ P-type A/D converters, 516
- Multidigit LED display, 206
- Multiple bit errors, checking during transmission, 462
- Multiplex divider/decoder, 416
- Multiplex oscillator, 416, 418
- Multiplexer section, inside the 4553 IC, 283
- Multiplexers (MUXs), 114, 457
- Multiplicand, 343
- Multiplication
 - with binary numbers, 344
 - process of, 343
- Multiplication dot (\cdot), symbolizing the AND function, 45
- Multiplication problem, sample, 344
- Multipplier, 343, 485
- Multiplying and accumulating, process of, 484

Multisim, 100
Multisim logic converter, 95
Multivibrators (MVs)
 circuits, 10–11
 types of, 237
MUX, working like a single-pole, many-position rotary switch, 458

N

NAND Boolean expression, methods of writing, 51
NAND function, 50, 51
NAND gates, 50–51
 forming an R-S flip-flop, 237
 resetting a counter, 264
 steps involving, 107
 truth table, 50
 two-input, 272, 273
 unique output from, 51
 as universal gates, 56, 106
 widely available, 56
 wired as an R-S latch, 320
 wiring to create any of the other basic logic functions, 56
NAND logic, using, 106–107
NAND logic function, 50, 61
NAND-NAND logic circuit, 107, 109, 111
Nanotube RAM (NRAM), 384
National Semiconductor (NS), 63
Natural phenomena, analog in nature, 4–5
Negated input, 48
Negative decimal number, 348–349, 351
Negative GND (black lead), 17
Negative temperature coefficient, of thermistors, 523
Negative-edge triggering, 74LS112 flip-flop using, 244
Negative-edge-triggered flip-flop, toggling, 249
Nematic fluid, 213
Nibble, 38
NMOS (N-channel MOS), 150
NMOS devices, interfacing with CMOS, 161
No inversion, flowing through a gate with, 353
Noise, 7, 145
Noise immunity, 144, 151
Noise margin, 144–145
NOMAD Personal Display System, 317
Noninverting buffer/driver, 48, 49
Noninverting CMOS buffer, 156
Noninverting input, to an op amp, 501
Nonlinear temperature-vs.-resistance characteristic, of a thermistor, 524
Nonvolatile memories, 372
Nonvolatile RAM (NVRAM), 362
Nonvolatile read/write memories, 381
Nonvolatile static RAM (NVS RAM), 381
Nonvolatile storage devices, 366
NOR Boolean expression, alternative methods of writing, 52
NOR gate, 51–52
NOR logic function, 56
NOR truth table, 52
Normal circuit, truth tables defining response of, 355–356
Normal output, 13, 236
North pole, of a magnet, 182
NOT-AND, 50
NOT circuit, 48
NOT OR gate, 51–52
NOT symbol, alternative, 48
Notation system, used with PLDs, 119
NOVRAM (nonvolatile RAM), 381
NPN phototransistor, 285
NPN transistor, driving an LED, 16
Numbers, adding in binary, 330–331
NVRAM (nonvolatile RAM), 381
NVS RAM (nonvolatile static RAM), 381–382

O

Octal number system, 27, 36
Octal numbers, 36–37
“Odd but not even gate,” 53

Ohm's law, 6
Ohm's law formula, 5
On-board diagnostics system (OBD I or OBD II), 178
On-chip clock generator, 519
1-of-8 data selector, 112
1-of-10 decoder (7442 TTL IC), 372
1-of-16 data selector, 114
1-second timer system, 270
100s display, 294
112-bit memory, 376
112-bit ROM, 375, 376
184-pin DDR SDRAM (double data rate synchronous DRAM), 385
184-pin RDRAM (Rambus DRAM), 385–386
One-package solution, to a complicated logic problem, 112
One-shot multivibrator circuit, push button connected jo, 10
One-shot multivibrator (MV), wiring, 12–14
1000s display, 294
One-time programming (OTP), of a chip, 397
Open-collector NAND TTL IC, 155
Open-collector outputs, of 7489 RAM, 367
Operand, 451
Operation, 451
Operational amplifier (op amp), 501–502, 508
Optical disc drive, 448
Optical discs, 389–392, 393
Optical encoder/counter system, incrementing the count, 287
Optical encoding
 for input, 284–285
 of a shaft's angular position, 199–200
Optical read/write CDs, 363
Optical sensors, 285, 287
Optical storage, 363
Optocoupled interrupter module, 285
Optocoupler, 167
Optoisolators, 167–169
OR (XOR) logic function, 81
OR function
 in PBASIC, 80
 summary of, 46, 47
OR gate, 46–47
 inverting to a NAND function, 61
 truth table, 46
OR logic function, substituting NAND gates, 56
OR symbol
 as another symbol for a NAND gate, 107
 with a small invert bubble, 51
Organization, of a very tiny microcomputer system, 447–448
Oscilloscope, 2, 20–21
Out-of-phase signals, 218
Output
 of A/D converters, 516
 of a digital system, 403, 404
 from a PLC driving motors and solenoids, 469
Output devices, 19, 164
Output drive characteristics, of several families of digital ICs, 147
Output drive currents, for the standard TTL, 160
Output indicator, 15, 16
Output logic levels, 517
Output peripheral devices, 448
Output section, of a computer, 446
Output unit, 447
Output voltages
 calculating for op amps, 503
 for CMOS ICs, 142, 143
 selecting, 19
Output waveforms, 237, 238
Outputs
 of digital circuits, 15
 inverting, 59, 60
Overbar (¯) symbol, above the output, 48
Overflow (OF) flag, 468
Oxidation, on metal surfaces, 530
Oxide films, overcoming, 531

P

P register, 485
PAL (programmable array logic), 116
PAL10H8, 121–122
PAL12H10 IC, 117
PAL/GAL IC part identification guidelines, 122
Panasonic 34-pin interface, 387
Paper tape, perforated, 388
Parallel adder, 335, 338
Parallel data, changing into serial data, 457
Parallel in-parallel out register, 306, 310
Parallel in-parallel out storage device, 310
Parallel in-serial out shift register, 306
Parallel in-serial out storage device, 310
Parallel interfaces, 460, 461
Parallel loading, of four bits at once, 308
Parallel port, 464
Parallel subtractors, 338–339
Parallel wires, sending bits in each word at one time, 457
Parallel-load shift registers, 308–310
Parallel-load shift-right/left register, 313–314
Parity bit, 461, 462
Parity bit generator circuit, 461–462
Parity error bit, of the status register, 468
Parity error (PE) flag, 468
Partial products, 344
Passive-matrix LCDs, 216
Past solders, 530
PBASIC (Parallax BASIC) editor program, 475
PBASIC 1 interpreter, in firmware, 477
PBASIC blink program, 479
PBASIC editor, in MS Windows, 479
PBASIC high-level language, 77
PBASIC interpreter software, 475, 477
PBASIC programs
 2-input AND function, 78, 79–80
 downloading, 128, 477, 480
 ServoTest 1, 187–188
PBASIC text editor program, loading, 78, 128
PC boards, loss of test point access on, 438
P-channel MOSFET, 150
PCMCIA 88-pin interface, 387
PCMCIA card, 386–387
PCMCIA device, containing flash memory, 387
PEEL (programmable electrically erasable logic), 116
Pencil-type solder iron and tips, 533
Peripheral devices, 446, 448, 449
Peripheral interface adapter (PIA), 460
Permanent magnet rotor, 172, 173
Personal Computer Memory Card International Association (PCMCIA), 386
Personal computers, 4
Petruszella, Frank, 470
Phase-change alloy, 392
Phase-change technology, 392
Photocell, 488, 490
Photodiodes, 486
Photoresistive cell, 520
Photoresistor, 520
Phototransistor, activating, 167, 287
Phototransistor detector, 167
PIC16C55 microcontroller, 475, 476
PIC16C56 microcontroller chip, 477
PIC16C57 microcontroller, 404, 405
PIC16C57 microcontroller chip, PBASIC 2 interpreter in firmware, 77, 477
PIC16CSX family of microcontrollers, specifications for, 474–475, 476
Piezo buzzer, 164
Pilot lamp (PL), controlling, 471
Pin configuration, of the 74194 shift register, 311, 312
Pin descriptions, 74HC164 shift register, 316, 317
Pin diagrams, 63
 74HC164 shift register, 316, 317
 74HC393 IC, 277
 74HC85 comparator, 288, 289
 7489 IC, 367, 368

- CD4081BE CMOS quad two-input AND gate IC, 66
- 4511 BCD-to-seven-segment latch/decoder/driver IC, 225
- MM5314 MOS LSI clock IC, 416, 417
- 74HC76 IC, 295, 296
- 7408 digital IC, 63
- TMS4764 ROM, 374
- 2732A 32K (4K X 8) ultraviolet-erasable PROM, 378, 380
- Pin labels and functions, for ADC0804 A/D converter IC, 518
- Pin-out information, for the standard A and B plugs, 465
- Pixels, 217, 486
- PLA (programmable logic arrays), 116
- Place value, 28–29
- Plastic range, using solders with, 531
- Plate (P), 221
- Plated tip, preparing for a soldering iron, 534
- Planners, 389
- PLC programming, 470
- PLDs. *See* Programmable logic devices (PLDs)
- Plus (+) sign, Boolean symbol for OR, 46
- PMOS (P-channel MOS), 150
- PN-junction diode, 207
- Pocket calculator, encoders and decoders, 31
- Pocket hard drive, 389
- Polarity
 - LED sensitive to, 207
 - of a magnetic field, 180
- Pololu carrier with sharp GP2Y0D810ZOF digital distance sensor 10 cm, 434
- Pololu Corporation sensor 1134, 434
- Pololu distance sensor module, 434
- Portable computers, memory modules, 386
- Portable hard drive, 389
- Ports, 128, 464
- Positive logic, 44
- Positive-edge-triggered flip-flop, toggling, 249
- Potentiometer
 - as analog device, 394, 395
 - sensing angular position of the output, 170
 - used for calibration, 524
- Power consumption, exceptionally low, 150
- Power dissipation, of digital ICs, 149
- Power supply voltages, 117
- Power transistor, attaching to output, 167
- Power-up initializing circuitry, 319
- Prescale counter, programming, 416
- Pretinning, 533
- Primary storage, 387
- Primitive diode ROM circuit, 372, 373
- Primitive frequency counter, schematic diagram, 423, 424
- Printed circuit (PC) board, 70
- Priority encoder, 74148 IC as, 256
- Priority feature, of 74147 encoder, 204
- Procedure, programming into a computer, 346, 348
- Processing, of a digital system, 403, 404
- Processing unit, of the PLC, 469
- Product, 343
- Product of sums (POS), 91–92
- Program, for a computer, 448
- Program (instructions), 446
- Program memory
 - instructions in, 450–451
 - placing the operand on the data bus, 453
 - sections of, 485
 - separate provided, 477
- Program memory size, 474
- Programmable AND and OR arrays, 121
- Programmable controller (PC), 469
- Programmable Logic Controllers* 4th edition (Petruzella), 470–472
- Programmable logic controllers (PLCs), 469–472
- Programmable logic devices (PLDs), 91, 116–122
 - advantages of, 116
 - burner, 118
 - described, 117–121
 - fabricating specialized encoders and decoders, 208
 - integrated circuit, 117
 - practical, 121–122
 - programming, 116–117
 - specific devices referred to, 116
 - typical equipment for programming, 117
- Programmable read-only memories (PROMs), 372, 377–380
 - basic idea of, 378
 - burners, 377, 380
 - generating final seven-segment output code, 418
 - permanent nature of burning, 378
- Programming
 - a computer, 348
 - an EPROM, 380
- Programming mode, 378
- Prohibited state, for a flip-flop, 237
- Propagation delay, of digital ICs, 148–149
- Propagation delays, for the FACT series, 151
- Protein-based memory, 372
- Pull-down resistor, 75, 153
- Pull-up resistor, 74, 152, 160, 182
- Pulse duration, 170
- Pulse generator, 170
- Pulse triggering, IEEE symbols for, 253
- Pulse width, 14, 170
- Pulses, counting the number of, 285–287
- Pulse-shaper circuit, 280, 281
- Pulse-width modulation (PWM), 170, 186
- Punched card, 388
- Pure resins, 532
- Push-button switch, 152
 - activating clear (CLR) input of an 8-bit binary counter IC, 74, 75
 - open, 10
 - using to make a digital signal, 9
- PWM (pulse-width modulation), 170, 186
- Q**
- Quad bilateral switch, 411
- Quadrature encoder, 200–201
- Quadruple two-input AND gate, 63
- Quantizing errors, 516
- Quine-McCluskey method, 100
- R**
- R register, 485
- R-2R ladder network, 504
- Radar (radio detection and ranging), 432
- Radiation-tolerant FACT ICs, 151
- Ramp A/D converter, 512, 513, 514
- Ramp generator, 512, 513
- Ramtron International, 384
- Random number, counter stopping at, 407
- Random-access memory (RAM), 362, 365–366
- Range of voltages, defined HIGH and LOW, 9
- RC circuits (resistive/capacitive circuits), 516
- Read light-rotate servo program, listing of, 491
- Read mode, on the 7489 RAM, 367
- Read operation, 366
- Reading, what is in memory, 367
- Reading from, memory, 362
- Reading out, information from RAM, 365
- Read-only memory (ROM), 362, 372–374
 - storing programs in a microcomputer, 473
 - used to store permanent data and programs, 374
 - uses of for encoders, 376
- Read/write memory, 365
- Real-world events, counting, 284–287
- Real-world information, as analog, 4, 499
- Recall operation, in NVSRAM, 381
- Receive data register, 466
- Receive-buffer-full (RF) flag, 468
- Receiver, in a UART, 460
- Receptacles, 464, 465
- Reciprocating slide, activated by motion of a servo motor arm, 489
- Recirculating down counter, 269
- Recirculating feature, 308, 310
- Recirculating line (feedback), 319
- Recording layer (silver-indium-antimony tellurium alloy), 392
- Redundant circuitry, 324
- Reflective-type sensor, 287
- Registered PLDs, 121
- Registers, 237, 305, 452, 466
- Relaxation oscillator, 418
- Relay ladder diagram, 470
- Remark statements, 79, 128, 187, 479, 489
- Repeated addition, 343
- Repeated addition-type multiplier system, 345
- Repeated divide-by-2 method, 197
- Repeated divide-by-2 process, 30–31
- Repeated divide-by-8 process, 36–37
- Repeated divide-by-16 process, 35
- Reset condition, for the flip-flop, 237
- Reset input, 236
- Reset mode
 - for 7476 J-K flip-flop, 244
 - in clocked R-S flip-flops, 239
- Reset pulse, generated, 425
- Reset/count function table, 272, 273
- Reset-count-display sequence, 419, 420, 425
- Resistance, decreasing causing an increase in current, 5
- Resistive ladder network, 501
- Resistor network, 500, 502, 504
- Resolution, of an A/D converter, 516
- Restriction of hazardous substances (RoHS) standards, 534
- RGB (red, green, blue) output, cameras storing, 487
- Rigid disk form, 388
- Rigid magnetic disk, 388
- RIMM, 385
- Ring counter, 319, 320
- Ripple counters, 262–264
- Ripple-blanking input (RBI), 209, 210, 212
- Ripple-blanking output (RBO), 209, 210
- RISC (reduced instruction set computing), 475
- Rise and fall times, fast, 251
- RJ-11 jack, 465
- RJ-45 jack, 465
- Roll dice switch, closing, 409
- ROM (read-only memory), 364, 375–377
- Rosins, combined with mild activators, 532
- Rotary encoder, determining direction of rotation of, 201
- Rotary switches, 112–113, 458
- Roulette wheel, 318
- Router, 450
- Rpm (revolutions per minute), 291
- R-S flip-flops, 236–238
- RS flip-flops, 154
- R-S latch, 236
- S**
- S, in a core part number, 65
- Sample/preload instruction, 439
- Sampling, 483
- Sampling time, 425
- Satellites, in geostationary earth orbit (GEO), 70
- Schematic symbol, for optocoupled interrupter module, 285
- Schmitt triggers, 251–252
- Schmitt-trigger inverter, 155, 251, 523
- Schmitt-trigger inverter IC, 414, 415
- Schmitt-trigger threshold detector, 180
- Schottky diodes, use of, 177
- Schottky TTL (LS-TTL), fan-out for low-power, 146
- Scientific calculators, making number system conversions, 37
- Scope. *See* Oscilloscope
- Scratch-pad memory, 365
- Seagate Technology, 388
- Secondary storage, 387–388
- Seconds timer, 270

- Sectors, 389
- Self-stopping counters, 269
- Self-stopping down counters, 426, 427
 - for LCD timer circuit, 427, 429
- Semiconductor flash memory devices, 361
- Semiconductor memory, 361, 364
- Semiconductor RAM ICs, static and dynamic types, 368
- Semiconductor storage, 363–364
- Sense operation, 366
- Sensing, what is in memory, 367
- Sensors
 - information from, 6
 - measuring analog phenomena, 5
 - PLC interfacing with, 469
- Sequential logic circuits, 90, 236
- Sequential logic devices, D flip-flops as, 242
- Serial data
 - changing parallel data into, 457
 - out from TDO (test-data output), 439
 - sent out on the TxD (transmit data) line of the UART, 468
 - at the TMS input pin, 438
- Serial data transmission, 458
- Serial form, 457, 460
- Serial in-parallel out register, 306, 308
- Serial in-serial out register, 306, 308
- Serial interface
 - standards, 461
 - transmitting data 1 bit at a time, 460
- Serial load, 308
- Serial output, observed at test data output (TDO), 439
- Serial port, 464
- Serial test data, shifted in through test data input (TDI), 439
- Serial-load shift register, 308
- Serial-load shift registers, 307–308
- Serial-load shift-left register, 313
- Serial-load shift-right register, 313, 323, 324
- Servo motor
 - connected to the BASIC Stamp 2 module, 186
 - controlling using a control pulse, 170, 171
 - interfacing BASIC Stamp 2 Module with, 186–188
 - interfacing with, 170–172
 - rotational characteristics, 172
 - valve activated using, 488
- Set condition, for the flip-flop, 237
- Set input, 236
- Set mode
 - for 7476 J-K flip-flop, 244
 - in clocked R-S flip-flops, 239
- Seven-input XOR gate, generating correct even parity bit, 462
- Seven-segment decoder/drivers, 207
- Seven-segment LED, 32
- Seven-segment LED displays, 205–207
- 72-pin SIMM (single in-line memory module), 385
- 74AC00 series, 142, 150
- 74ACQ00 series, 142
- 74ACT00 series, of CMOS ICs, 66, 142, 143
- 74ACTQ00 series, of CMOS ICs, 142, 143
- 74ALVC (advanced low-voltage CMOS), 69
- 74ALVC00 series, 143, 150, 151
- 74AVC (advanced very low voltage CMOS), 69
- 74C00 series, 142, 143
 - of CMOS ICs, 66
 - equivalent of 7400 series of TTL ICs, 151
- 74FCT00 series, of CMOS ICs, 66, 142, 143
- 74FCTA00 series, of CMOS ICs, 142, 143
- 74HC00 series, 66, 67, 142, 151
- 74HC04 inverter, positive pulse emitted by, 294
- 74HC164 8-bit serial in-parallel out shift register, 315–317, 319
- 74HC193 IC, wired as a mod-6 counter, 279–280
- 74HC193 presetable synchronous 4-bit binary up/down counter IC, 277–279
- 74HC193 dual 4-bit binary ripple counter, 276–277
- 74HC4543 BCD-to-seven-segment latch/decoder/driver CMOS IC, 218, 219, 220
- 74HC4543 IC, functions of, 429, 432
- 74HC76 IC, pin diagram for, 295, 296
- 74HC85 4-bit magnitude comparator, 288
- 74HCT00 series, of CMOS ICs, 142, 161
- 74HCT34 noninverting IC, 161
- 74LS04 inverter, 147–148
- 74LS112 TTL-LS J-K flip-flop, 244–246
- 74LS14 IC, 523
- 74LS279 Quad S-R Latch IC, 238
- 74LVC (low-voltage CMOS), 69
- 74LVX00, 143–144
- 7400 series logic circuits, propagation delays, 150
- 7400 series of TTL ICs, 63
- 7404 inverter, complementing the output, 460
- 7404 inverter IC, 32
- 7406 TTL ICs, 162
- 7408 digital IC, pin diagram for, 63
- 7414 Schmitt-trigger inverter, 423
- 7414 Schmitt-trigger inverter TTL IC, 251, 252
- 7416 TTL ICs, 162
- 7447 BCD-to-seven-segment decoder chip, 407, 408
- 7447 binary-to-seven-segment LED decoder/driver IC, 32
- 7447A IC, 520–521
- 7474 TTL D flip-flop, 241, 242
- 7475 TTL 4-bit transparent latch, 248
- 7475/74LS75/74HC75 4-bit latch, 238
- 7476 TTL J-K flip-flop, 243–244, 245
- 7483 4-bit adder, counterparts to, 340
- 7489 read/write RAM, programming, 370
- 7489 read/write TTL RAM, 367
- 7489 TTL RAM, access time of, 370
- 7493 4-bit ripple counter, packaged in a 14-pin DIP, 272, 273
- 7493 IC counter, used as a mod-8 counter, 273, 275
- 7493 TTL 4-bit binary counter, 272, 273
- 74121 one-shot multivibrator IC, 13
- 74125 quad three-state buffer TTL IC, 456, 457
- 74147 10-line-to-4-line priority encoder, 204, 205
- 74147 decimal-to-binary encoder IC, 32
- 74150 MUX, 459, 460
- 74154 DEMUX, 460
- 74154 DEMUX IC, 459
- 74189 64-bit RAM, 367
- 74192 decade counter, 413
- 74192 up/down decade counter IC, 272–275
- 74194 4-bit bidirectional universal shift register, 311
- 74194 IC 4-bit bidirectional universal shift register, 315
- 74194 IC register, 311
- 74194 IC shift register, 313–315
- Shaft encoder, 199–200
- Shaft or wheel, locating angular position of, 200
- Shape, of a waveform, 19
- Shift registers, 305
 - categories of, 306
 - characteristics of, 306
 - constructing, 306
 - converting serial data to parallel data or parallel data to serial data, 315
 - formed by flip-flops, 236
 - forming, 242
 - in IC form, 306
 - memory and shifting characteristics, 305–306
 - operating, 307
 - troubleshooting, 323–324
 - used as temporary memories, 315
 - using, 315, 318–323
- Shift-and-add method, 345, 346
- Shift-left mode, 74194 shift register, 311, 312
- Shift-right mode, 74194 shift register, 311, 312
- Short circuit, dropping power supply voltage, 228
- Short-form addition table, for binary, 331
- Sign bit, of a number, 348
- Signal, defined, 2
- Signal conditioning, 251
- Signed decimal numbers, converting to 2s complement form, 349
- Signed numbers, adding or subtracting, 349
- Silicon dioxide layers, inside a CMOS chip, 150
- Silver brazing, 532
- SIMM memory modules, 385
- Simple self-contained digital electronic games, 407
- Simplified 16-bit (4 X 4) PROM, 378
- Sine wave, sampling, 483
- Single short, positive pulse, output from the one-shot circuit, 10
- Single-package microcontroller, 473
- Single-pole, double-throw (SPDT) switches, 9, 174
- Single-pulse clock, 10
- Sinking current, 157, 158
- SIP (single inline package), 385
- 60/40 solder, 530
- 60-Hz signal, input into a digital clock, 412
- 60-Hz sine wave, converted to a square wave, 419–420
- 64 MB of flash memory, 392
- 64-bit memory, organization of, 365
- 64-bit scratch-pad memory, 366
- 68-pin PCMCIA memory card, 387
- Six-wire unipolar stepper motor, 176–177
- Slot-type module, 287
- Slow rise time, for a sine wave, 414
- Slow set, 416
- Small-outline IC (SOIC), 68, 384, 404, 474
- Small-scale integration (SSI), 406
- SMT (surface-mount technology) packages, 63
- SN74LVC08, 68–69
- Snap action, changing to either HIGH or LOW, 155
- Snap-action bounce-free output, 180
- Snap-action pushbutton switch, 14
- Snapshots or sample, of data flowing into or out of the internal chip logic, 439
- Social networking, 7–8
- Software, 32, 374
 - doing multiplication, 348
- SOIC (small-outline IC), 68, 384, 404, 474
- Solder, nature of, 530–531
- Solder connection, making, 534
- Solder heat bridge, 533
- Soldering
 - advantages of, 530
 - defined, 530
 - high-reliability, 530
 - as very complex control problem, 533
- Soldering irons, 532, 533–534
- Solderless breadboard, 11, 12, 14
- Solenoid, 165, 166
- Solid-state computer, 387
- Solid-state disk, 387
- Solid-state potentiometer, 394
- Solid-state relay, 167, 169
- Sonar (sound navigation and ranging), 432
- Source supply, in a MOSFET, 151
- Sourcing current, 157
- South pole, of a magnet, 182
- SP (space), 202
- Speed versus power graph, comparing several of the TTL and CMOS families, 149
- Spindle speed, of hard drives, 389
- SPST switch, electronically operated, 411
- SPTD switch debouncing circuit, 238
- Square waves, useful in digital electronics, 21
- SRAM (static random-access memory), 364, 366, 370–371
- SRAM FPGA (static RAM field-programmable gate array), 116
- SSOP (shrink small-outline package), 474
- Standard logic symbol, for the NAND gate, 50
- Standard TTL gate, capabilities, 147
- Standard TTL inverter, typical propagation delay for, 148
- Start input control, activating, 427
- Start/stop control, 414, 415, 419
- Static discharges, protecting from, 150
- Static electricity, resistance to, 151
- Static RAM, 368
- Static RAM ICs, 367–370

Status register, 466, 467
 Step angles, for common stepper motors, 172
 Stepper motors
 control sequence, 172, 174
 interfacing, 174–177
 noncontact and timed operation of, 435
 rotating a fixed angle, 172, 173
 Storage capacity, graphed in MB, 393
 Storage function, of a digital system, 403, 404
 Storage registers, forming, 242
 Store operation, in NVSRAM, 381
 Stored program, in a computer, 446
 Stored-program digital computer, 447
 Strength, of a magnetic field, 180
 Subscripts, indicating the base of a number, 34
 Subsystems, assemblies of, 403
 Subtraction problem, sample binary, 337
 Subtractors, 330
 Successive-approximation A/D converter, 514–515, 519
 Successive-approximation logic unit, 514
 Summing amplifier, 500, 501, 502, 504
 Sum-of-products (SOP) form, 91
 Sum-of-products calculation, 483, 484
 Surface condition, of area to be soldered, 533
 Surface oxides, removing, 531
 Surface bounce, caused by a mechanical switch, 12
 Switch debouncing circuit, 153, 154–155
 Switchcheck, IF-THEN statement in, 481
 Switches, interfacing TTL and CMOS, 152–155
 Switching threshold
 of the 7404 IC, 251, 252
 voltage increasing, 145
 Switch-to-CMOS interface circuits, 152, 153
 Switch-to-TTL interfaces, 152
 Synchronous counters, 265–267, 272
 Synchronous flip-flops, 249
 Synchronous operation, 240
 of a D flip-flop, 242
 Synchronous parallel loading, of a shift register, 312

T

T flip-flop, 246, 276–277
 “T” series CMOS ICs, 143
 Tabular method of simplification, 100
 Tachometer, 6
 TAP controller, 438
 TB (terabyte), 363
 TCK (test clock), 438
 TDI (test data input), 438
 TDO (test data output), 438
 Temperature, digitizing, 523–524
 Temperature-sensitive resistor, 523
 Temporary memory, in a shift register, 305
 Temporary storage, of data, 366
 10-line-to-4-line priority encoder, 204, 205
 10s display, 294
 Test access points, loss of, 440
 Test access port (TAP), 438
 Test data register, 438
 Test reset (TRST) input, 438
 Test vectors, loading into output boundary-scan cells, 439
 Testing, as an important part of any complex system, 440
 Texas Instruments, “SN” designating, 63
 Texas Instruments digital IC, markings on, 64
 Thermal linkage, 533
 Thermal mass, 532
 Thermistor, 523, 524
 Thin-film medium, 389
 Thin-film transistor (TFT) technology, 217
 Thin-film transistors, 216–217
 30-pin SIMM, 385
 3.5-in. floppy disks, 389, 390
 3-bit (mod-8) counter, logic diagram for, 265–267
 3-bit adders, 335
 3-bit counter, with self-stopping feature, 269
 3-digit up counter circuit, 282
 3in-3out logic problem, 128, 129, 130

Three-digit BCD counters, 280–283, 291–292
 Three-dimensional Karnaugh map, 105
 Three-input AND gate, 57
 Three-state buffers, 370, 454
 commercial version of, 456, 457
 truth table for, 49
 Three-terminal LM34 and LM35 temperature sensors, 524
 3132 bipolar Hall-effect switch, 179–182
 3132 Hall-effect switch, 181, 182
 3144 unipolar Hall-effect switch, 182
 Three-variable Karnaugh map, 101–102
 Tilde (~) symbol, 81
 Time, graphing versus input voltage, 20
 Time displays, 412
 Time duration, for a cycle, 21
 Time-base clock, 426, 427
 Time-set control, 412, 413
 Timing diagrams, given for sequential logic circuits, 237
 Tin, melting point of pure, 530
 Tin-silver-copper alloy, 530
 Tip styles and sizes, for soldering irons, 532
 TMS (test mode select), 438
 TMS4664 ROM, access time of, 374
 TMS4764ROM, 8192-word by 8-bit ROM, 374
 Toggle mode, 244, 267
 Toggling, 9, 243
 Tracks, number of, 389
 Traditional method of distance sensing, 434
 Transducer, 500, 520
 Transistor driver circuit, 159
 Transistor-transistor logic (TTL). *See* TTL (transistor-transistor logic)
 Transmission function, of a digital system, 403, 404
 Transmission gates, 151, 411
 Transmission system, using MUX-DEMUX arrangement, 458–460
 Transmit data register, 466
 Transmitter, in a UART, 460
 Transparent latch, 248, 256
 Transparent mode, of 7475 IC, 256
 Transponder ECM, 8
 Triangulation method, 432, 433, 434
 Trigger pulse, 293–294
 Trigger voltage, 13
 Triggering, flip-flops, 249–250
 Triode vacuum tube, 221, 222
 Tristate output, 367
 Troubleshooting
 a CMOS circuit, 71
 counters, 295–297
 a decoding circuit, 227–228
 a full adder, 355–356
 ICs, 71
 knowledge of circuit operation key to effective, 18
 most important tools, 297
 shift registers, 323–324
 simple gate circuits, 69–71
 simple logic circuits, 185–186
 six hints for successful, 356
 Truth tables
 A/D converter, 506, 507
 AND, 44
 Boolean expressions, 93
 clocked R-S flip-flop, 240
 constructing from Boolean expressions, 94
 D flip-flop, 241
 D/A converter, 500, 504, 506
 described, 93
 4511 BCD-to-seven-segment latch/decoder/driver CMOS IC, 225–226
 4555 three-digit BCD counter IC, 280, 281, 283
 four-input OR gate, 58
 full adder, 333, 355
 full subtractor, 336, 337
 half adders, 332
 inverter, 48
 J-K flip-flop, 243, 244

NAND gate, 50
 NAND logic function, 61
 NOR function, 52
 NOR gate, 51
 OR circuit, 46
 as origin of most logic circuits, 93
 parity bit generator, 462
 R-S flip-flops, 237
 74HC164 shift register, 316, 317
 74HC193 counter, 277–278
 74HC4543 BCD-to-seven-segment latch/decoder/driver CMOS IC, 220
 74LS112 J-K flip-flop, 244, 246
 7447A decoder/driver IC, 209, 210
 7474 D flip-flop, 242
 74125 IC, 456, 457
 74194 shift register, 311, 312
 three-input AND gate, 57
 three-state buffer, 49
 XOR and XNOR gates, 55
 OR and XOR gates, 53
 TTL (transistor-transistor logic) circuits, 16
 digital circuit, testing, 17–18
 digital ICs, constructing, 62
 family of ICs, 9
 IC counters, 273–275
 input logic levels showing noise margin, 145
 inputs floating at a HIGH logic level, 152
 inverter, expected outputs from, 142
 logic family, 141
 logic gates, 62–65
 voltage profile, 142
 voltage levels, 9
 XOR gates, not used, 214
 TTL 7414 Schmitt-trigger inverter IC, 414, 415
 TTL 7447A BCD-to-seven-segment decoder/driver, 209–212
 TTL 7483 4-bit binary full adder, 340, 341
 TTL and CMOS noise margins, comparing, 144
 TTL digital IC, top of a typical, 63
 TTL families, families, voltage characteristics of all, 148
 TTL ICs
 interfacing with CMOS ICs, 160–163
 typical fan-out value for, 146
 TTL-to-CMOS interfacing, 161
 TTL-to-LED interfacing, 156, 157
 TTL-type digital circuit, testing, 19
 “T”-type CMOS gates, having input voltage profile of a TTL IC, 161
 12-h display format, 416
 20-mA current loop teletype standard, 461
 20-pin DIP IC, 121
 24LC16 EEPROM, for program storage, 405
 24-pin DIP IC, 77
 24-pin EPROM DIP IC, 377, 378
 25-pin DB (data bus) connector, 464
 27XXX series EPROM, 378
 28F512 512K (64K X 8) CMOS flash memory, 382, 383
 Twisted-nematic field-effect LCD, 213–214
 Twisted-nematic field-effect technology, 215
 2-bit quadrature, 200–201
 2-bit ripple counter, troubleshooting a faulty, 295–297
 Two-digit seven-segment LCD, 215, 216
 240-pin DDR2 SDRAM, 386
 Two-input AND function PBASIC program, 78, 79–80
 Two-phase stepper motor, 172
 2s complement 4-bit adder/subtractor system, 353–354
 2s complement 8-bit, 350–352
 2s complement addition, 349, 350
 2s complement conversions chart, 535
 2s complement form, converting to binary, 349
 2s complement number conversion chart, 351
 2s complement numbers, 27

2s complement representations
 determining sign and magnitude of a number, 348
 of a negative number converting to decimal
 equivalent, 351
 of negative numbers, 348
 of positive numbers, 348
 2s complement subtraction, 349–350
 Two-terminal AD592 precision IC temperature
 transducer, 524
 2114 static RAM, 368–370
 2732 EPROM chip, block diagram of, 378
 2732 EPROM IC, 378, 380
 2732A 32K (4K X 8) ultraviolet-erasable PROM, pin
 diagram, 378, 380
 Two-way path, transferring data into and out of the
 MPU, 448
 TXD (transmit data) line of the UART, 468
 Type A plug, connecting upstream to the USB
 ports, 464
 Type B plugs, connecting downstream to the
 USB ports, 464–465

U

UARTs (universal asynchronous receiver-transmitters),
 460, 465–466
 Ultra-large-scale integration (ULSI), 406
 Ultrasonic distance sensor, 432–434
 Ultrasonic receiver, 433
 Ultraviolet (UV) light, erasing EPROM, 377
 Undefined region, 16
 between HIGH and LOW, 9
 pin floating in, 295
 voltage at, 9
 Unipolar Hall-effect switches, 182
 Unipolar or four-phase stepper motors, 176
 Unipolar stepper motors, 172
 Unique output, AND truth table, 45
 Universal flip-flop, 246
 Universal gate, NAND gates as, 56
 Universal serial bus (USB) port, 464–465
 Universal shift register, 311, 312
 Unknown frequency, measured by a digital frequency
 counter, 419
 Unused input leads, connecting, 150
 Unused outputs, leaving unconnected, 150
 Unwanted voltages, 145
 Up position, switch in, 63
 USB 1.0 low-speed rate, 465
 USB 1.1 full-speed rate, 465
 USB 2.0
 high-speed rate, 465
 ports, 392
 receptacle, 464
 USB 3.0
 ports, 393, 464
 superspeed rate, 465
 USB flash drives, 361, 363, 448
 USB flash memory, 364, 392–393
 USB floppy disk drives, 389
 USB ports, 392, 393, 464–465
 USB standard type A plug, 392

USB transmission rates, classified, 465
 UV erasable PROMs, 377

V

Vacuum fluorescent (VF) display, 206, 221–223, 224
 Valve, controlling flow of liquid, air flow, or light
 intensity, 488, 489
 Variable, declaring, 187–188
 Variable output, on the function generator, 19
 Variable reluctance stepper motors, 172
 Variable-frequency signal, from vehicle speed sensor, 6
 Variable-voltage signal, 6
 Vehicle speed sensor, engine control module (ECM), 6
 Veitch diagrams, 100
 Venn diagrams, 100
 Vertical deflection knob, on a scope, 20
 Vertical line (|) symbol, in the NOR function in
 PBASIC, 81
 Very large-scale integration (VLSI), 406
 Very small capacity unit, 374
 VF display, driving, 224–226
 VGA (video graphics adapter), 464
 Video port, 464
 Vision enhancement, 317
 VLSI ICs, 406
 Volatile memory, RAM as, 366
 Voltage, output by an analog circuit, 2
 Voltage characteristics, of both TTL and
 CMOS ICs, 141
 Voltage comparators, 506, 508–509
 Voltage divider circuit, 488, 490
 Voltage gain, 503
 of an amplifier, 502
 of the op amp, 510
 Voltage incompatibility, from TTL (NMOS)
 to CMOS, 161
 Voltage levels, for digital signals, 9
 Voltage profile, of a typical TTL inverter (7404 IC),
 251, 252
 Voltage rails, of the power supply, 142
 Voltage regulator, on BOE, 479
 Voltage versus time format, for signals, 2
 Voltage-controlled oscillator (VCO), 319
 Volt-ohm-millimeter (VOM), 2

W

WAN (wide area network), 450
 Warning horn (H), 472
 Waste from electrical and electronic equipment
 (WEEE) standards, 534
 Waveform diagram
 74192 counter IC, 272, 275
 74194 shift register, 311, 312
 for a clocked R-S flip-flop, 239
 graphing analog output, 2
 for an unknown frequency, 419, 420
 Waveforms
 digital, 9
 with fast rise and fall times, 251
 given for sequential logic circuits, 237, 238
 input, 237, 238

LOW, HIGH, LOW, HIGH, 9, 10
 ramp-type A/D converter, 513
 showing propagation delays for a standard TTL
 inverter, 148

Waveshaping, by a 7414 Schmitt-trigger inverter, 423
 Waveshaping circuit, 414, 415, 416
 Wear-out condition, for DS1804 IC, 397
 Wetting action, 531
 Winchester drive, 388
 Wiper position, in DS1804-100 digital potentiometer,
 396

Wiring diagrams

BCD decoder/driver circuit, 224
 clocked R-S flip flop, 240
 digital dice game, 407, 408
 digital light meter circuit, 522
 divide-by-60 counter circuit, 413, 414
 elementary digital voltmeter, 510, 511
 experimental LCD timer circuit, 427, 430–431
 4-bit parallel-load recirculating shift register, 309
 latched encoder-decoder circuit, 254–256

Words, 38

in 64-bit memory, 365
 in computer jargon, 37
 Work surfaces, melting the solder, 534
 World Wide Web (WWW), 7
 Worst-case conditions, 147
 Write input, of the data memory, 453
 Write mode, RAM in, 367
 Write operation, 366
 Write-once read-many (WORM) storage devices,
 391–392
 Write-protect notch, 389, 390
 Write-protected disk, 389, 390
 Writing
 in memory, 362
 to RAM, 365

X

XNOR (exclusive NOR) function, 54, 55, 56
 XOR function, Boolean expression for, 53
 XOR gates

inverting data at, 353
 logic symbol for, 53
 output for, 53
 for parity bit generation and error detection, 462
 truth tables, 53
 unique characteristic of, 53
 unique output of, 54
 in a variety of arithmetic circuits, 54
 XOR logic function, substituting NAND gates, 56
 XORing, ways of expressing, 54
 X-Y position indicator, for a display system, 211

Z

Zener diode, in a comparator, 509
 Zero-blanking circuit, 418
 ZIF (zero insertion force) IC socket, 117
 Zinc-oxide fluorescent material, 221
 ZIP (zig-zag in-line package), 385

